

Paris - Charles de Gaulle Airport CDG/LFPG

Summer 2017 - Start Of Season Report

Report data extraction date: 28 March 2017

Table of contents

EVOLUTION OF ALLOCATED SLOTS AT THE START OF SEASON (SOS)	2
TOTAL SLOTS BY OPERATOR – TOP15	2
SLOTS DISTRIBUTION PER ALLIANCE	4
SIZE OF AIRCRAFT	5
ALLOCATED SLOTS BY DESTINATION	6
GEOGRAPHICAL DISTRIBUTION OF ALLOCATED SLOTS	8
SLOTS DISTRIBUTION BY SERVICE TYPE	8
CDG S17 - AIRPORT COORDINATION PARAMETERS	9
GRAPHICS : INITIAL DEMAND	10
GRAPHICS : SOS ALLOCATED SLOTS	12
SLOTS ALLOCATION BY OPERATOR	14

The contents of this report may not be reproduced without the written consent of COHOR.

Evolution of allocated slots at the Start Of Season (SOS)

Summer 2016 (31 weeks): 306 219 Allocated Slots

Summer 2017 (31 weeks): 305 583 Allocated Slots

Allocated slots at SOS decreased by  0.21% from S16 to S17 (on average per week).

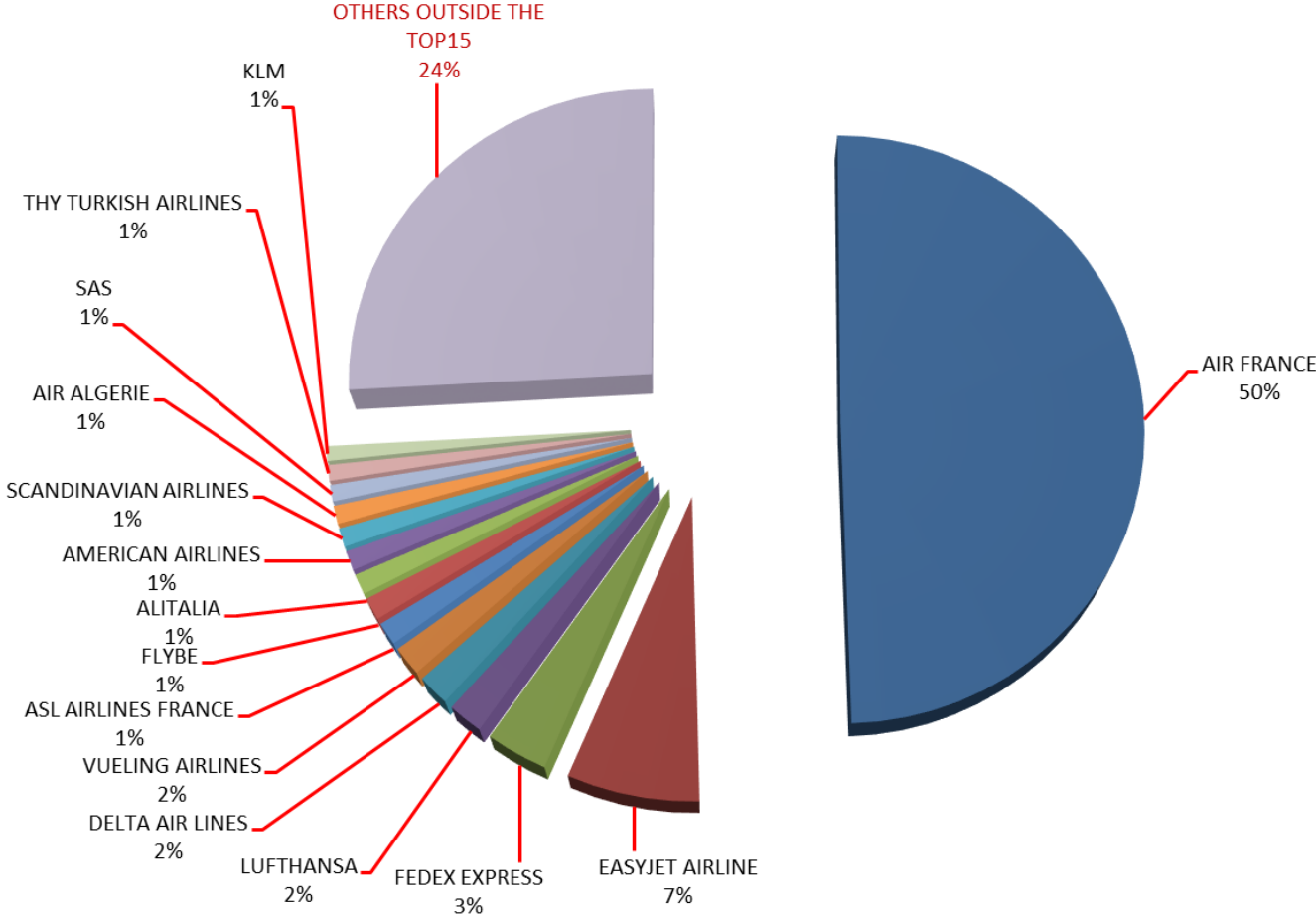
Slots Allocated OK S17: 98,48%

Total slots by operator – TOP15

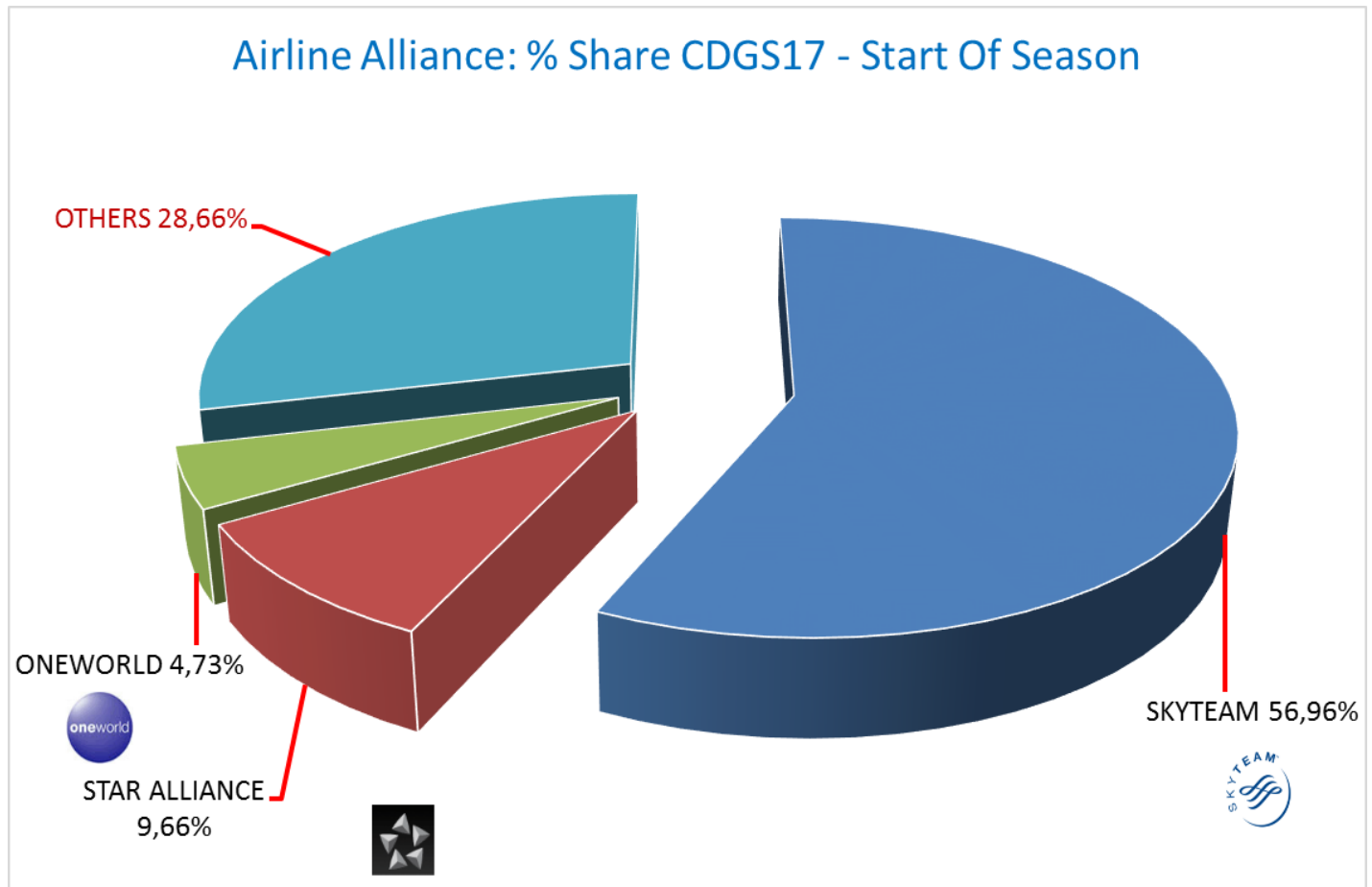
Airline	S16	%SHARE S16	S17	%SHARE S17	%CHANGE (on average per week)
AIR FRANCE	151 088	49,34%	151 568	49,60%	0,32%
EASYJET AIRLINE	21 228	6,93%	21 066	6,89%	-0,76%
FEDEX EXPRESS	9 906	3,23%	9 913	3,24%	0,07%
LUFTHANSA	6 101	1,99%	5 675	1,86%	-6,98%
DELTA AIR LINES	5 122	1,67%	5 190	1,70%	1,33%
VUELING AIRLINES	5 432	1,77%	4 894	1,60%	-9,90%
ASL AIRLINES FRANCE	3 989	1,30%	3 794	1,24%	-4,89%
FLYBE	5 562	1,82%	3 720	1,22%	-33,12%
ALITALIA	3 786	1,24%	3 407	1,11%	-10,01%
AMERICAN AIRLINES	3 302	1,08%	3 255	1,07%	-1,42%
SCANDINAVIAN AIRLINES	3 976	1,30%	3 134	1,03%	-21,18%
AIR ALGERIE	2 740	0,89%	3 042	1,00%	11,02%
BRITISH AIRWAYS	2 842	0,93%	2 758	0,90%	-2,96%
THY TURKISH AIRLINES	2 852	0,93%	2 646	0,87%	-7,22%
KLM	2 598	0,85%	2 468	0,81%	-5,00%
OTHERS	75 695	24,72%	79 053	25,87%	9,41%
GRAND TOTAL	306 219	100,00%	305 583	100,00%	4,54%
Part of AF/KL Group*	153 752	50,21%	154 075	50,42%	4,98%

* AIRFRANCE - HOP - KLM - TRANSAVIAFRANCE - TRANSAVIAHOLLANDE

CDGS17 Start Of Season - Distribution by Airline



Slots distribution per alliance



ONEWORLD - Members Airlines (source : fr.oneworld.com 29Oct15)

AIR BERLIN - AMERICAN AIRLINES - BRITISH AIRWAYS - CATHAY PACIFIC - FINNAIR - IBERIA - JAPAN AIRLINES -
LATAM - MALAYSIA AIRLINES - QANTAS - QATAR AIRWAYS - ROYAL JORDANIAN - S7 AIRLINES - Sri Lankan Airlines - TAM

SKYTEAM - Members Airlines (source : www.skyteam.com 29Oct15)

AEROFLOT - AEROLINEAS ARGENTINAS - AEROMEXICO - AIREUROPA - AIRFRANCE - ALITALIA - CHINA AIRLINES - CHINA EASTERN AIRLINES -
CHINA SOUTHERN AIRLINES - CZECH AIRLINES - DELTA AIR LINES - GARUDA INDONESIA - KENYA AIRWAYS - KLM - KOREAN AIR
Middle East Airlines - SAUDIA - TAROM - VIETNAM AIRLINES - XIAMENAIR

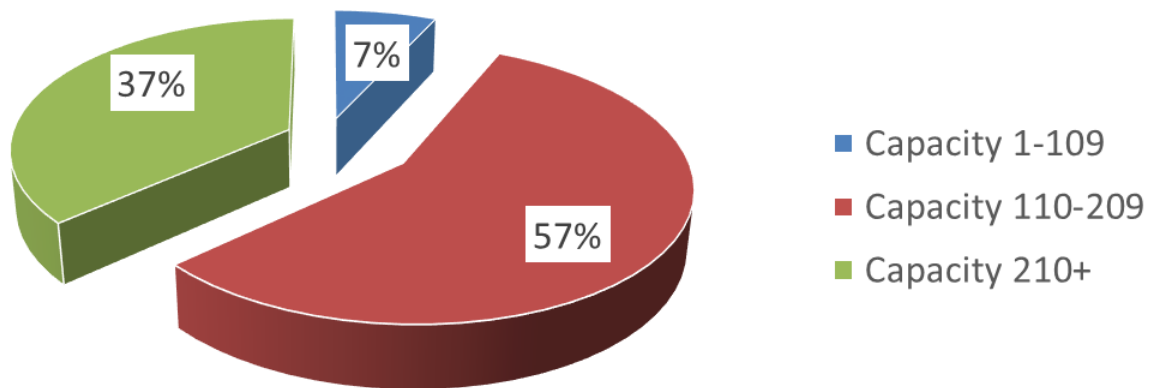
STAR ALLIANCE - Members Airlines (source : www.staralliance.com 29Oct15)

ADRIA AIRWAYS - AEGEAN AIRLINES - AIR CANADA - AIR CHINA - AIR INDIA - AIR NEW ZEALAND - ANA - ASIANA AIRLINES - AUSTRIAN AIRLINES
AVIANCA TACA HOLDINGS - BRUSSELS AIRLINES - COPA AIRLINES - CROATIA AIRLINES - EGYPTAIR - ETHIOPIAN AIRLINES - EVA AIR
LOT POLISH AIRLINES - LUFTHANSA - SCANDINAVIAN AIRLINES - SHENZHEN AIRLINES - SINGAPORE AIRLINES - SOUTH AFRICAN AIRWAYS
SWISS - TAP PORTUGAL - THAI - TURKISH AIRLINES - UNITED

Size of aircraft

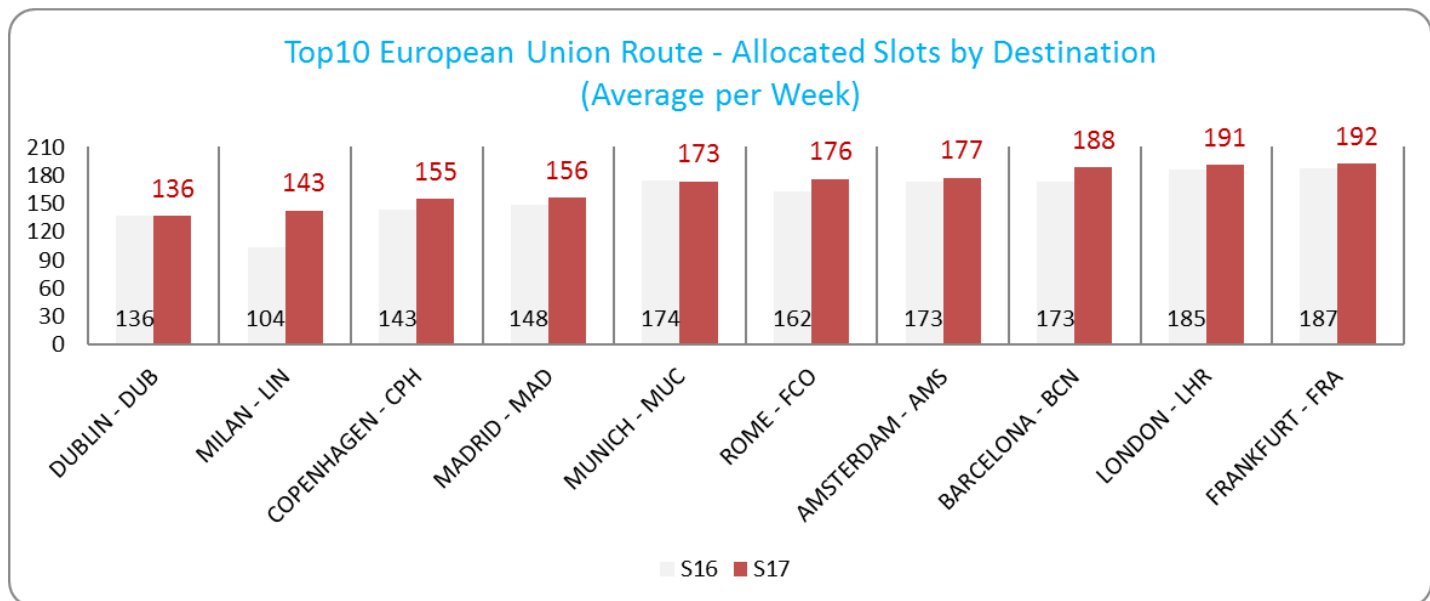
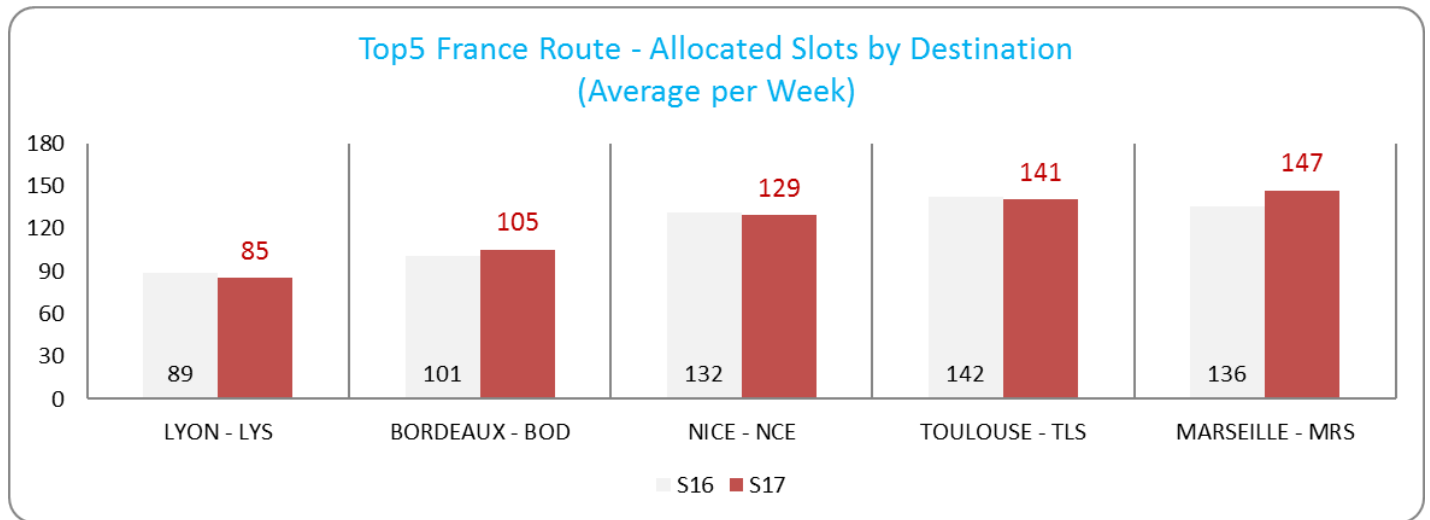
	S16	S17	Evolution
Average Size of Aircraft (Seats)	191	193	0,9%
Total Passenger Seat Offer	54 651 070	55 088 493	0,8%

CDGS17: Passenger Aircraft Size Distribution

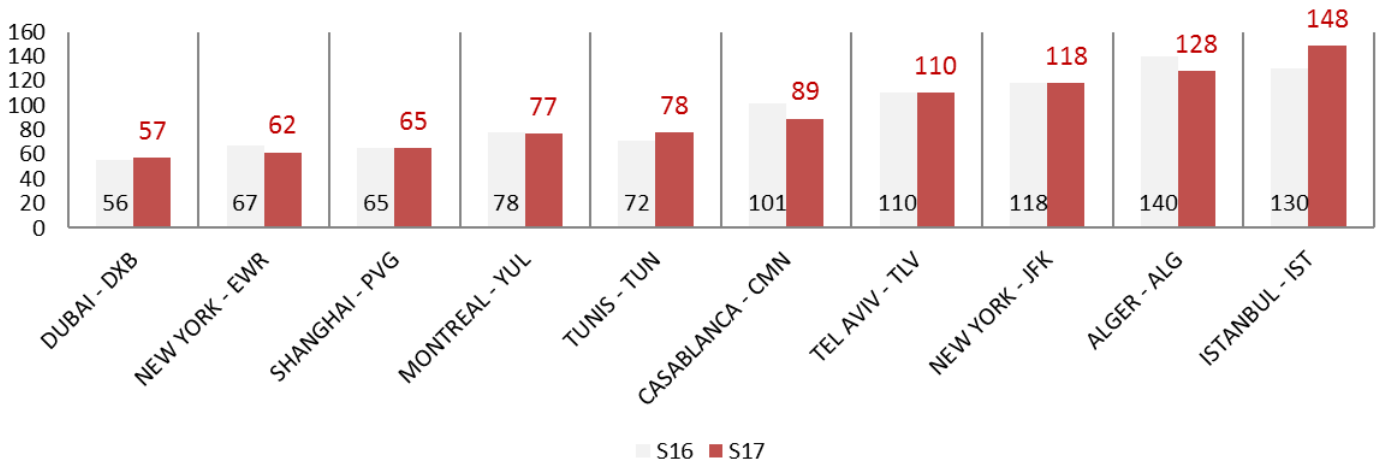


Allocated slots by destination

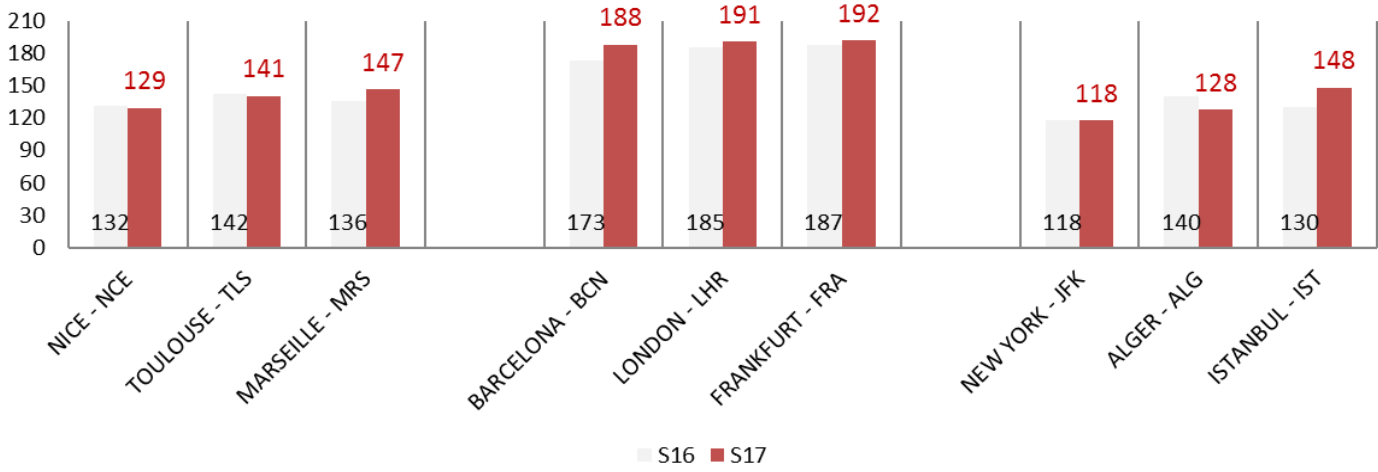
(CDGS17 vs CDGS16)



Top10 International Route - Allocated Slots by Destination
 (Average per Week)



Comparison of first 3 destinations for each group
 Allocated Slots by Destination
 (Average per Week)



Geographical distribution of allocated slots



Slots distribution by service type

Group Services for All Destinations	S17	S16
Regular Services	92,14%	92,04%
Freight Services	5,91%	5,86%
Charter Services	1,54%	1,65%
Technical Services	0,39%	0,44%
Others	0,02%	0,01%

CDG S17 - Airport Coordination Parameters

Runway scheduling limits:

Order of October 11th, 2016 updating the modified order of October 19th, 1999 set the airport capacity of Paris-Charles-de-Gaulle:

CDG RUNWAY CAPACITY S17						
	Arrivals	Arrivals	Arrivals	Departures	Departures	Total
Local time	/10 min	/hour	per rolling hour	/10 min	/hour	arrivals + departures /hour
0 h à 0 h 59	7 (6)	30	73	7 (6)	25	40
1 h à 1 h 59	7 (6)	20	73	7 (6)	25	40
2 h à 2 h 59	7 (6)	20	73	7 (6)	20	32
3 h à 3 h 59	7 (6)	20	73	7 (6)	20	32
4 h à 4 h 59	7 (6)	20	73	7 (6)	20	32
5 h à 5 h 59	7 (6)	30	73	7 (6)	25	40
6 h à 6 h 59	11 (1)	41	73	7 (6)	38	67
7 h à 7 h 59	12 (3)	49	73	13 (2)	66	103
8 h à 8 h 59	13 (1)	62	73	12 (3)	62	109
9 h à 9 h 59	12 (3)	62	73	13 (2)	64	120
10 h à 10 h 59	12 (3)	60	73	13 (1)	67	111
11 h à 11 h 59	12 (3)	61	73	13 (1)	63	112
12 h à 12 h 59	12 (3)	54	73	13 (2)	65	111
13 h à 13 h 59	12 (3)	55	73	13 (3)	70	110
14 h à 14 h 59	13 (3)	58	73	13 (1)	63	105
15 h à 15 h 59	13 (1)	56	73	13 (1)	65	108
16 h à 16 h 59	11 (6)	56	73	13 (1)	63	107
17 h à 17 h 59	13 (3)	61	73	12 (3)	62	107
18 h à 18 h 59	13 (1)	60	73	13 (2)	62	111
19 h à 19 h 59	13 (3)	62	73	12 (3)	62	109
20 h à 20 h 59	13 (1)	56	73	13 (3)	64	108
21 h à 21 h 59	12 (3)	53	73	13 (1)	53	97
22 h à 22 h 59	11 (6)	46	73	11 (6)	41	80
23 h à 23 h 59	8 (6)	40	73	10 (6)	30	62

The acronym N (M) means that during the corresponding hour, a maximum of N movement can be scheduled for M period of 10 minutes, N-1 movement during the 6-M others periods of 10 minutes, provided that the other constraints in the corresponding hour are not exceeded.

Terminal constraints:

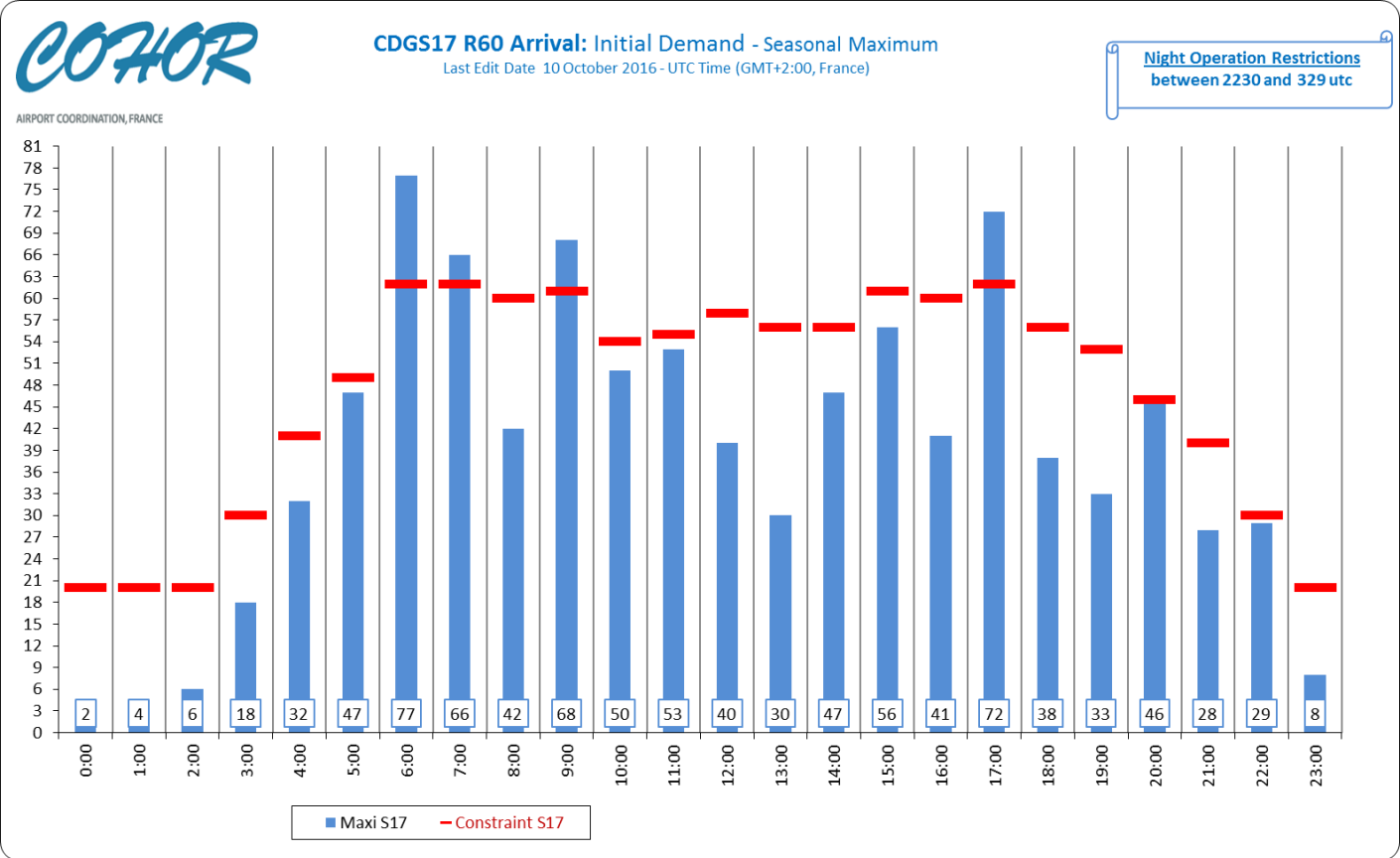
The maximum departing passengers flows per hour by terminal are:

- Terminal 1 : 2100
- Terminal 2A : 1100
- Terminal 2C : 900
- Terminal 2D : 1200
- Terminal 2E : 5400
- Terminal 2F : 2800
- Terminal 2G : 700
- Terminal 3 : 1000

These constraints are implemented by COHOR to warn carriers of possible difficulties in CDG terminals. Cooperation between these carriers and Aéroports de Paris is required to find solutions

Graphics : Initial demand

CDGS17 R60 Arrival



CDGS17 R60 Departure

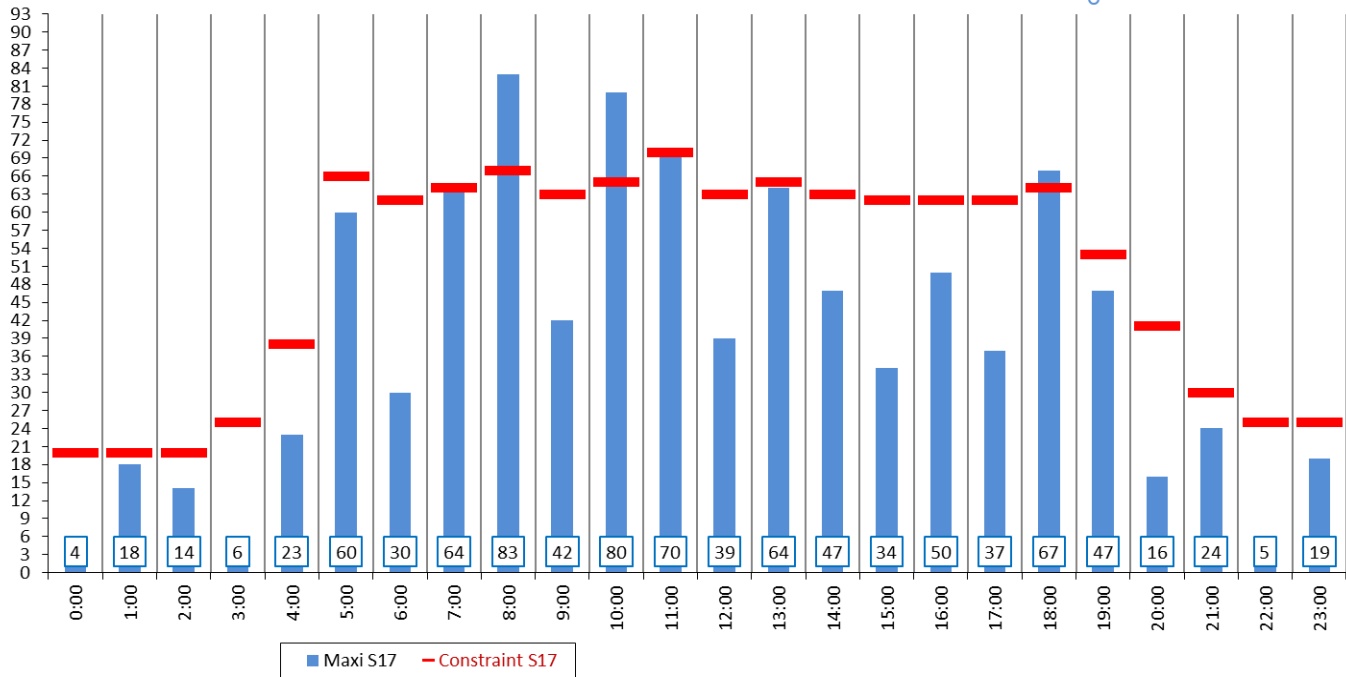


CDGS17 R60 Departure: Initial Demand - Seasonal Maximum

Last Edit Date 10 October 2016 - UTC Time (GMT+2:00, France)

Night Operation Restrictions
 between 2200 and 259 utc

AIRPORT COORDINATION, FRANCE



CDGS17 R60 Mixed

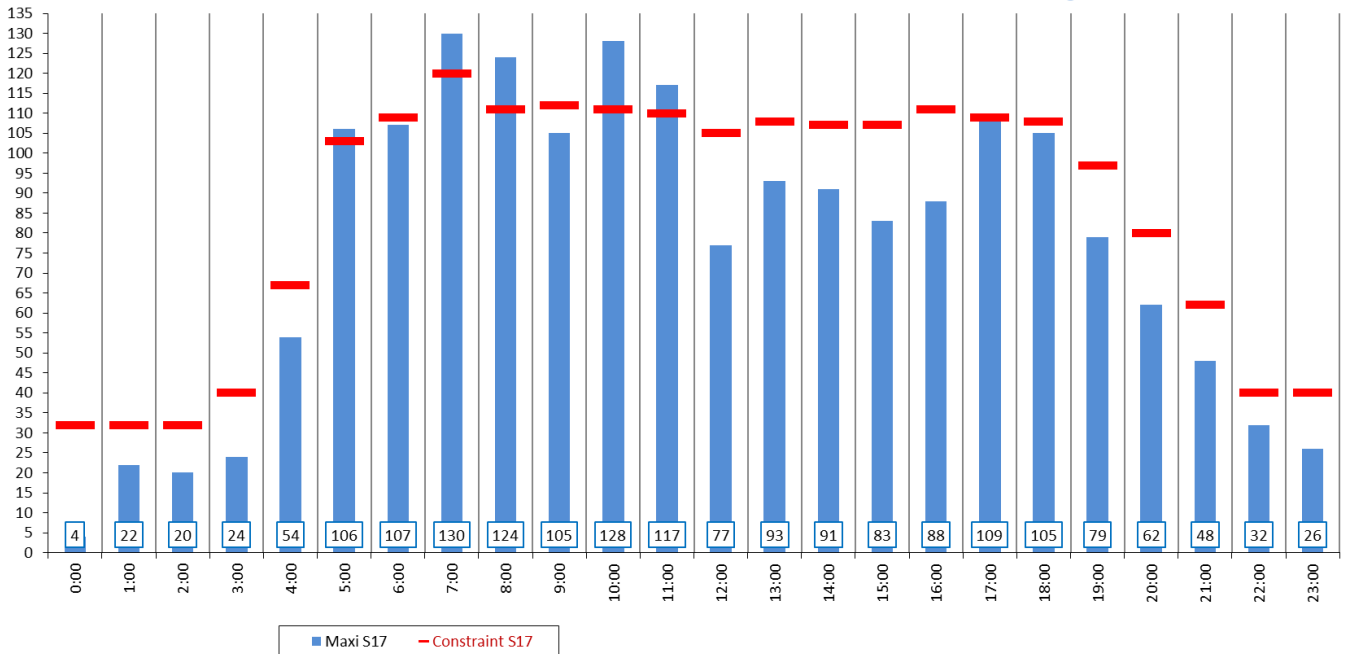


CDGS17 R60 Mixed: Initial Demand - Seasonal Maximum

Last Edit Date 10 October 2016 - UTC Time (GMT+2:00, France)

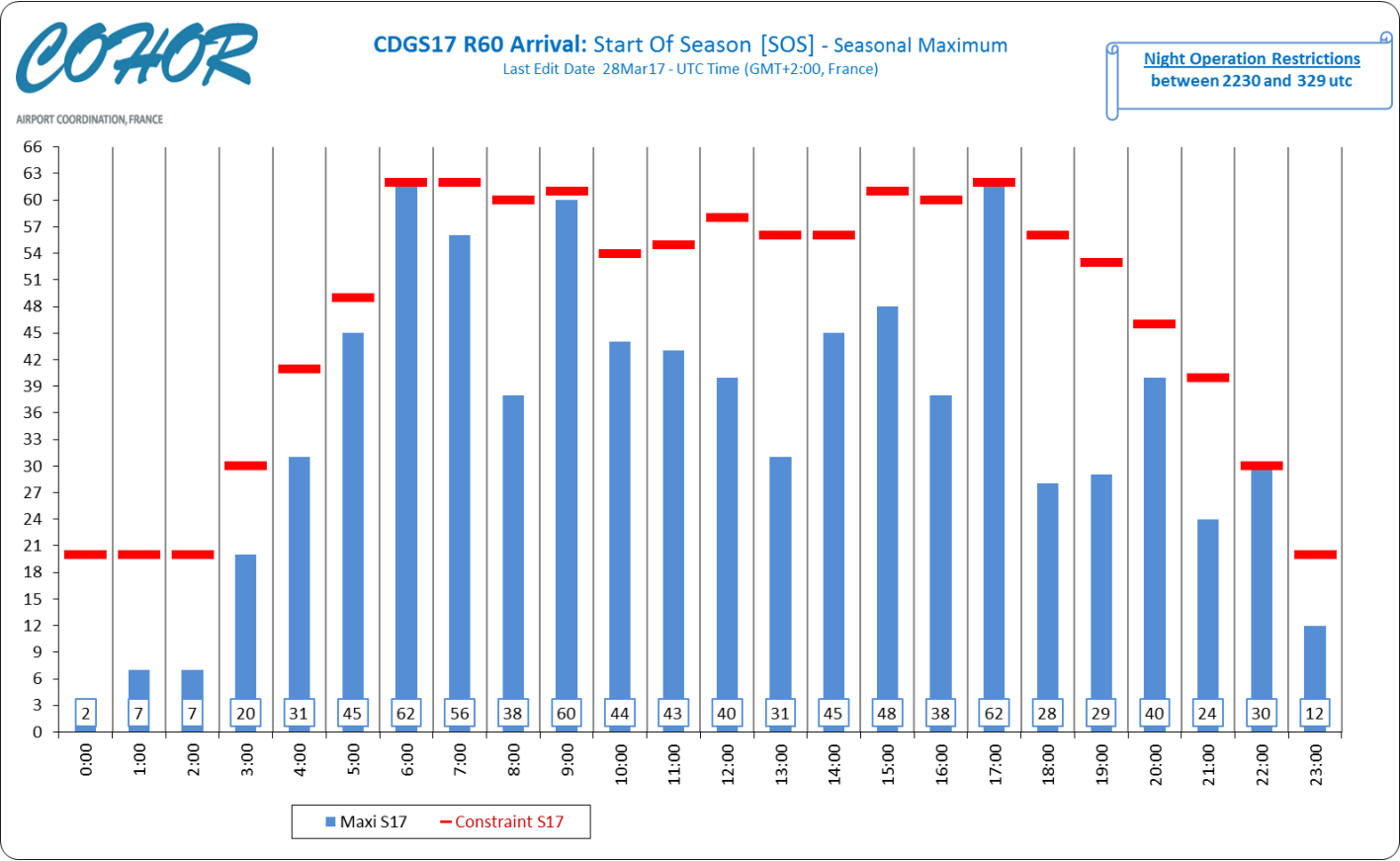
Night Operation Restrictions
 Dep between 2200 and 259 utc
 Arr between 2230 and 329 utc

AIRPORT COORDINATION, FRANCE

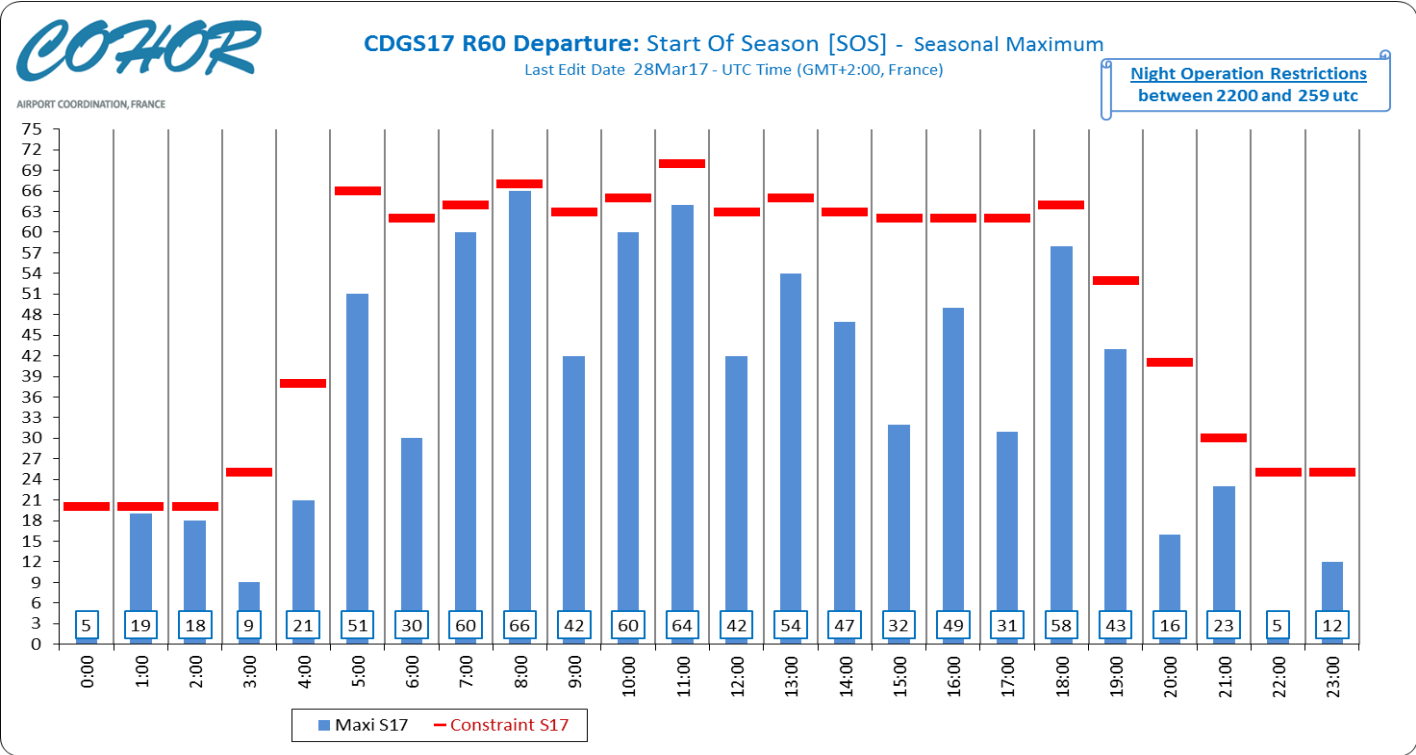


Graphics : SOS Allocated slots

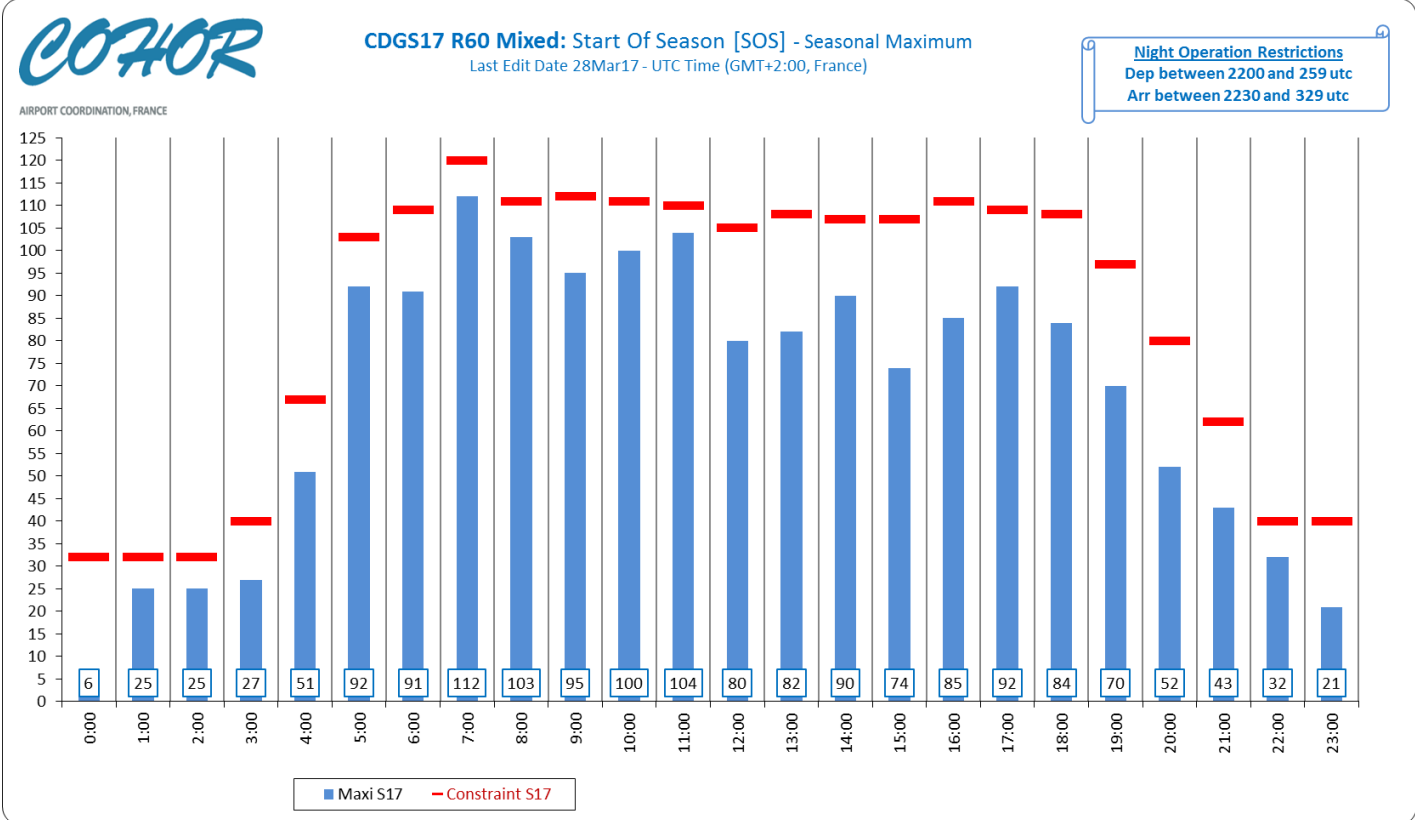
CDGS17 R60 Arrival



CDGS17 R60 Departure



CDGS17 R60 Mixed



Slots allocation by operator

Airline	Total Slot
ADRIA AIRWAYS	478
AEGEAN AIRLINES	2 234
AER LINGUS	2 170
AEROFLOT RUSSIAN AIRLINES	2 170
AEROMEXICO	434
AIGLE AZUR TRANSPORTS AERIENS	405
AIR ALGERIE	3 042
AIR ARABIA MAROC	248
AIR ASTANA JSC	186
AIR AUSTRAL	868
AIR BALTIC	744
AIR BERLIN	1 684
AIR CAIRO	131
AIR CANADA	1 044
AIR CHINA	1 306
AIR CONTRACTORS LTD	1
AIR CORSICA	86
AIR EUROPA	1 885
AIR FRANCE	151 568
AIR FRANCE HANDLING	12
AIR INDIA	434
AIR MADAGASCAR	162
AIR MAURITIUS	512
AIR NOSTRUM	54
AIR SEYCHELLES	248
AIR TAHITI NUI	368
AIR TRANSAT	1 049
AIRBRIDGE CARGO	248
AirHorizont	4
AirSERBIA	372
ALBA STAR	12
ALITALIA	3 407
ALL NIPPON AIRWAYS	434
AIMasria Universal Airlines	6
AMC AVIATION	100
AMERICAN AIRLINES	3 255
ARKEFLY	2
ARKIA ISRAELI AIRLINES	224
ASIANA AIRLINES	310
ASL Airlines Belgium	917
ASL AIRLINES FRANCE	3 794
ASSISTANCE EUROPE HANDLING	32
ASTRA AIRLINES	58
ATLANTIC AIRLINES LTD	608
AtlasGlobal	434

Airline	Total Slot
AUSTRIAN AIRLINES	1 680
AVANTI AIR	4
AZERBAIJAN AIRLINES	248
BELAVIA BELARUSSIAN AIRLINES	434
BMI REGIONAL	738
Braathens Regional Airlines	2
BRITISH AIRWAYS	2 758
BULGARIA AIR	40
CARPATAIR	29
CATHAY PACIFIC	736
CHINA EASTERN AIRLINES	1 050
CHINA SOUTHERN AIRLINES	442
COBALT AIR	180
CORENDON AIRLINES	6
CORENDON DUTCH AIRLINES	6
CORSAIR	39
CROATIA AIRLINES	914
CSA CZECH AIRLINES	1 300
DANISH AIR TRANSPORT	6
DARWIN AIRLINES	4
DELTA AIR LINES	5 190
DREAMJET	824
EASYJET AIRLINE	21 066
ECAir - Equatorial Congo Airlines	434
EGYPTAIR	740
EL AL	1 392
EMIRATES	1 302
ENTER AIR	702
ETHIOPIAN AIRLINES	325
ETIHAD AIRWAYS	870
EUROPEAN AIR TRANSPORT	1 789
EUROWINGS	2 090
EVA AIR	415
Express Air Cargo	306
FEDEX EXPRESS	9 913
FINNAIR	2 170
Fly Egypt	34
FLY ONE	156
FLYBE	3 720
FLYLAL	865
FREE BIRD AIRLINES	60
GERMANIA FLUGGESELLSCHAFT	19
GERMANWINGS	1 328
GULFAIR	434
HAINAN AIRLINES	186
HIFLY AIRLINES	1
HOP	16

Airline	Total Slot
IBERIA	434
ICELANDAIR	712
ISRAIR AIRLINES	19
JAPAN AIRLINES	868
JET AIRWAYS (INDIA) Private Limited	434
JET TIME	4
JETAIRFLY	1 013
JET2.COM	278
KENYA AIRWAYS	396
KLM	2 468
KOREAN AIR	612
KUWAIT AIRWAYS	248
LOT POLISH AIRLINES	1 302
LUFTHANSA	5 675
LUXAIR	880
MAHAN AIR	248
MALETH-AERO	6
MERIDIANA FLY SPA	186
MIDDLE EAST AIRLINES	868
MISTRAL AIR	2
MNG AIRLINES	323
MONTENEGRO AIRLINES	386
NEOS	24
NETJETS TRANSPORTES AEREOS S.A.	2
NORWEGIAN	620
NOUVELAIR TUNISIE	1 434
OMAN AIR	434
ONUR AIR	258
PAKISTAN INTERNATIONAL AIRLINES	248
PEGASUS AIRLINES	36
PRIMERA AIR	12
PRIMERA AIR NORDIC	12
QATAR AIRWAYS	1 426
Regional Jet Ou	4
ROSSIYA AIRLINES	434
ROYAL AIR MAROC	1 100
ROYAL JORDANIAN AIRLINES	438
RWANDAIR	248
SAUDIA	805
SCANDINAVIAN AIRLINES	3 134
SIAVIA	8
SINGAPORE AIRLINES	434
SMALL PLANET AIRLINES	6
SMALL PLANET AIRLINES GMBH	5
Smartlynx Airlines Estonia	15
SMARTLYNX ITALIA	27

Airline	Total Slot
SN BRUSSELS AIRLINES	1 302
SRILANKAN AIRLINES	248
STAR AIR	618
SUNEXPRESS	186
SWISS INTERNATIONAL AIRLINES	2 158
TAM LINHAS AEREAS	434
TAROM	860
TASSILI AIRLINES	324
THAI AIRWAYS	420
THOMSONFLY	4
THY TURKISH AIRLINES	2 646
TITAN AIRWAYS	4
TRADE AIR	2
TRANS AEREOS DE CABO VERDE	64
TRANSAVIA AIRLINES	18
TRANSAVIA FRANCE	5
TRAVEL SERVICE AIRLINES	951
TUI	2
TUNISAIR	321
TUNISAIREXPRESS	192
TURKMENISTAN AIRLINES	78
UKRAINE INTL AIRLINES	848
UNITED AIRLINES	2 134
UNITED PARCEL SERVICE	620
URAL AIRLINES	62
UZBEKISTAN AIRWAYS	122
VIETNAM AIRLINES	590
VOLOTEA SL	34
VUELING AIRLINES	4 894
WOW Air	868
XL AIRWAYS FRANCE	1 345